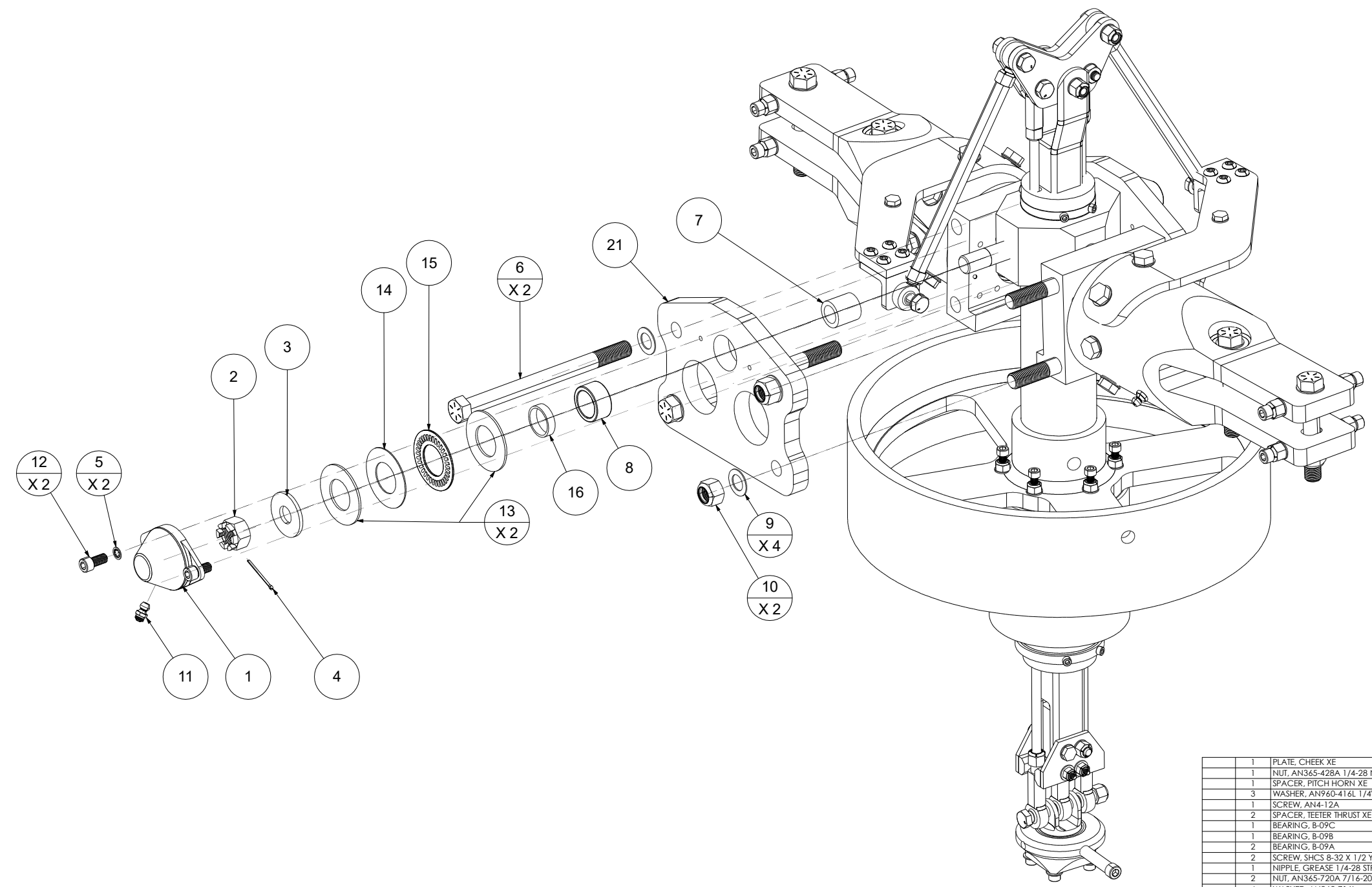


REVISIONS			
REV	DESCRIPTION	DATE	APPROVED
A	INITIAL RELEASE	4/08/2019	NFR



QTY REQ'D	NOMENCLATURE OR DESCRIPTION	PART NO. OR IDENTIFYING NO.	SPECIFICATION	MATERIAL OR NOTES	ITEM NO.
	1 PLATE, CHEEK XE	30010	32-05		21
	1 NUT, AN365-428A 1/4-28 NYLOCK	31058	AN365-428A		20
	1 SPACER, PITCH HORN XE	30100	32-06		19
	3 WASHER, AN960-416L 1/4" SLIM	31065	AN960-416L		18
	1 SCREW, AN4-12A	31048	AN4-12A		17
	2 SPACER, TEETER THRUST XE	30110	32-07		16
	1 BEARING, B-09C	50215	B-09C		15
	1 BEARING, B-09B	50214	B-09B		14
	2 BEARING, B-09A	50213	B-09A		13
	2 SCREW, SHCS 8-32 X 1/2 YELLOW ZINC	30693			12
	1 NIPPLE, GREASE 1/4-28 STRAIGHT	31149	V-65A		11
	2 NUT, AN365-720A 7/16-20 NYLOCK	31133	AN365-720A		10
	4 WASHER, AN960-716L	31137	AN960-716L		9
	1 BEARING, B-05A	50209	B-05A		8
	1 BEARING, B-05B	50210	B-05B		7
	2 SCREW, HHCS 7/16-20 X 5.5 GRADE 8	50210			6
	2 WASHER, AN936-A8 STAR LOCK	31673	AN936-A8		5
	1 PIN, COTTER 1/16" X 1" ZINC	31147	V-19		4
	1 WASHER, 7/16" X 1.25" OD SAE	31140			3
	1 NUT, AN310-8 CASTLE	31135	AN310-8		2
	1 CAP, TEETER BEARING XE	30930A	33-02		1
	1 MAIN ROTOR ASSEMBLY	31773			0

PARTS LIST					
QTY REQ'D	NOMENCLATURE OR DESCRIPTION	PART NO. OR IDENTIFYING NO.	SPECIFICATION	MATERIAL OR NOTES	ITEM NO.

5. PRESS FIT ITEM 8 INTO ITEM 21
 4. PRESS FIT ITEM 7 ONTO TEETER BLOCK
 3. CUT ITEM 6 TO LENGTH, PAINT FOR CORROSION (4 TIMES)
 2. REMOVE BURRS AND BREAK ALL SHARP EDGES TO .01
- ▲ MATERIAL: SEE BILL OF MATERIALS
- NOTES: UNLESS OTHERWISE SPECIFIED

X	X
NEXT ASSY	USED ON
APPLICATION	

THIS DRAWING AND THE INFORMATION THEREIN IS THE PROPERTY OF THE COMPOSITE FX COMPANY AND IS CONSIDERED PROPRIETARY AND CONFIDENTIAL TO THE COMPOSITE FX COMPANY. REPRODUCTION OR DISCLOSURE OF ANY PART OF THIS DRAWING OR INFORMATION THEREIN AND THE USE THEREOF FOR MAKING OTHER DRAWINGS OR FOR MAKING APPARATUS THEREFROM ARE PROHIBITED WITHOUT PRIOR SPECIFIC WRITTEN CONSENT OF COMPOSITE FX.

DRAWN BY: J SUAREZ 4/08/19
 CHECKED DATE: D JUNKIN 4/08/19
 APPD DATE: D JUNKIN 4/08/19

UNLESS OTHERWISE SPECIFIED DIMENSIONS ARE IN INCHES
 TOLERANCES ON
 FRACTIONS DECIMALS ANGLES
 X +/- 0.05
 .XX +/- .025
 .XXX +/- 0.005

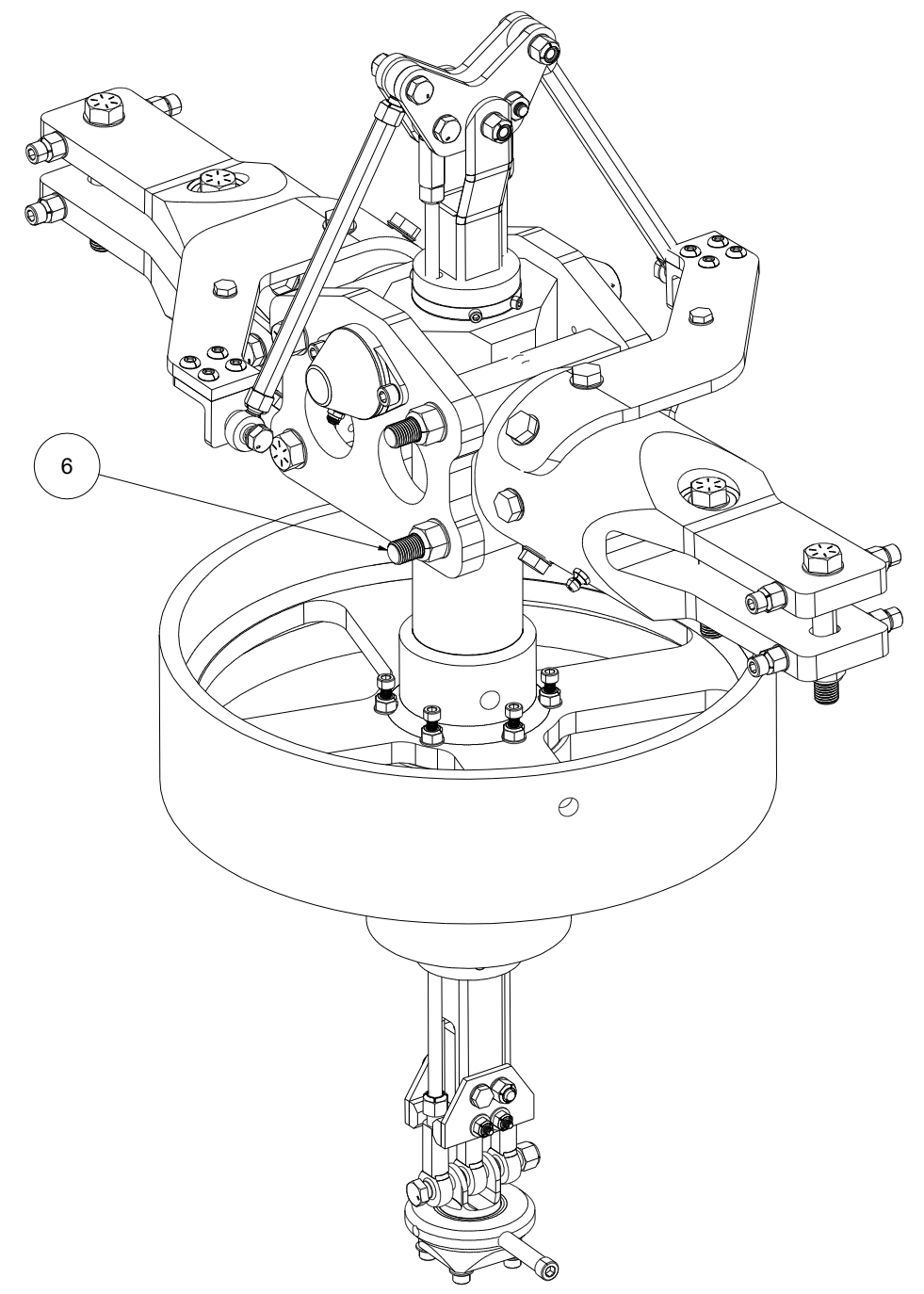
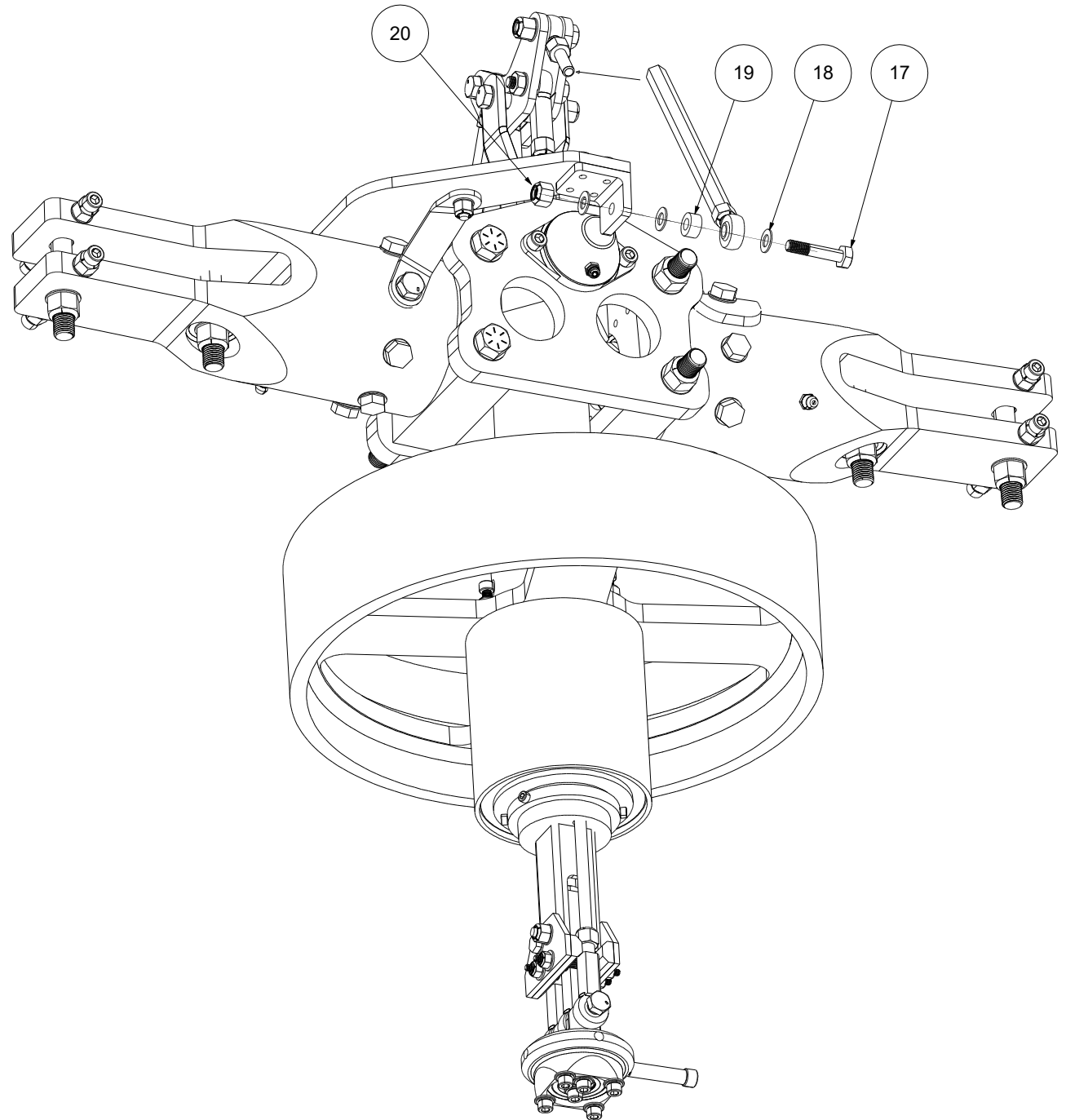
COMPOSITE FX
 TRENTON FLORIDA

TITLE: **MAIN ROTOR ASSEMBLY**

SIZE: **D** CODE IDENT. NO.: **31773** REV: **A**


SCALE: NONE WT. ACT. SHEET 1 OF 2

REVISIONS			
REV	DESCRIPTION	DATE	APPROVED
A	INITIAL RELEASE	4/08/2019	NFR



3. CUT PART NUMBER 6 X 4 TO LENGTH, PAINT FOR CORROSION
 2. REMOVE BURRS AND BREAK ALL SHARP EDGES TO .01
 MATERIAL: SEE BILL OF MATERIALS
 NOTES: UNLESS OTHERWISE SPECIFIED

APPLICATION	USED ON
X	X
NEXT ASSY	

QTY REQ'D	NOMENCLATURE OR DESCRIPTION	PART NO. OR IDENTIFYING NO.	SPECIFICATION	MATERIAL OR NOTES	ITEM NO.
PARTS LIST					
THIS DRAWING AND THE INFORMATION THEREIN IS THE PROPERTY OF THE COMPOSITE FX COMPANY AND IS CONSIDERED PROPRIETARY AND CONFIDENTIAL TO THE COMPOSITE FX COMPANY. REPRODUCTION OR DISCLOSURE OF ANY PART OF THIS DRAWING OR INFORMATION THEREIN AND THE USE THEREOF FOR MAKING OTHER DRAWINGS OR FOR MAKING APPARATUS THEREFROM ARE PROHIBITED WITHOUT PRIOR SPECIFIC WRITTEN CONSENT OF COMPOSITE FX.		DRAWN BY DATE J SUAREZ 4/08/19 CHECKED DATE D JUNKIN 4/08/19 APPD DATE D JUNKIN 4/08/19 APPD DATE APPD DATE	COMPOSITE FX <small>TRENTON FLORIDA</small> 		
		UNLESS OTHERWISE SPECIFIED DIMENSIONS ARE IN INCHES TOLERANCES ON FRACTIONS DECIMALS ANGLES X +/- 0.05 .XX +/- .025 .XXX +/- 0.005		TITLE MAIN ROTOR ASSEMBLY SIZE CODE IDENT. NO. 31773 SCALE NONE WT. ACT. SHEET 2 OF 2	
				REV A	