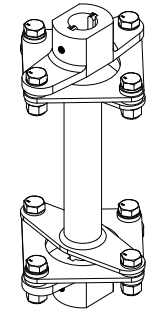
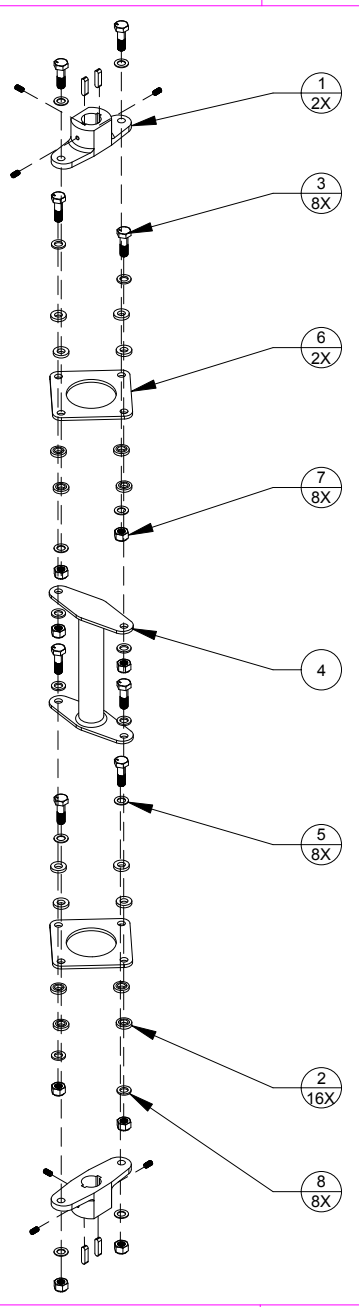


REVISIONS			
REV	DESCRIPTION	DATE	APPROVED
A	INITIAL RELEASE	4/08/2019	NFR



QTY	REQD	NOMENCLATURE OR DESCRIPTION	PART NO. OR IDENTIFYING NO.	SPECIFICATION	MATERIAL OR NOTES	ITEM NO.
		6 SCREW, 10-32 X 3/8 SET	31012			10
		4 KEYSTOCK	31011			9
		8 WASHER, AN960-516	31138			8
		8 NUT, LOCK AN365-524	31059			7
		2 PACK, FLEX PLATE	30841			6
		8 WASHER, AN960-516L	31066			5
		1 WELDMENT, SHAFT LOWER DRIVE XET	30089			4
		1 WELDMENT, SHAFT LOWER DRIVE XE285	30088			4
		1 WELDMENT, SHAFT LOWER DRIVE XE	30625			4
		8 SCREW, AN5-10A	31005			3
		16 WASHER, FLEX PLATE	31010			2
		2 FLANGE, COUPLER DRIVE SHAFT	30610			1

PARTS LIST		COMPOSITE FX	
TITLE		TRENTON FLORIDA	
SUBKIT, LOWER DRIVE SHAFT XE		REFERENCE	
SIZE	CODE IDENT. NO.	WT. ACT.	SHEET 1 OF 1
D	--		

THIS DRAWING AND THE INFORMATION THEREIN IS THE PROPERTY OF THE COMPOSITE FX COMPANY AND IS CONSIDERED PROPRIETARY AND CONFIDENTIAL TO THE COMPOSITE FX COMPANY. REPRODUCTION OR DISCLOSURE OF ANY PART OF THIS DRAWING OR INFORMATION THEREIN AND THE USE THEREOF FOR MAKING OTHER DRAWINGS OR FOR MAKING APPARATUS THEREFROM ARE PROHIBITED WITHOUT PRIOR SPECIFIC WRITTEN CONSENT OF COMPOSITE FX.

DRAWN BY: W CONVILLE 6/17/19
 CHECKED DATE: D JUNKIN 4/25/19
 APPD DATE: D JUNKIN 4/08/19

UNLESS OTHERWISE SPECIFIED DIMENSIONS ARE IN INCHES
 TOLERANCES ON FRACTIONS DECIMALS ANGLES
 +/- .005 .XX +/- .025 +/- .5°
 .XXX +/- 0.005

2. REMOVE BURRS AND BREAK ALL SHARP EDGES TO .01
 MATERIAL: SEE BILL OF MATERIALS
 NOTES: ALL DIMS IN INCHES UNLESS OTHERWISE SPECIFIED