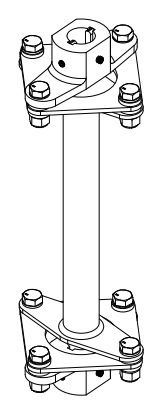
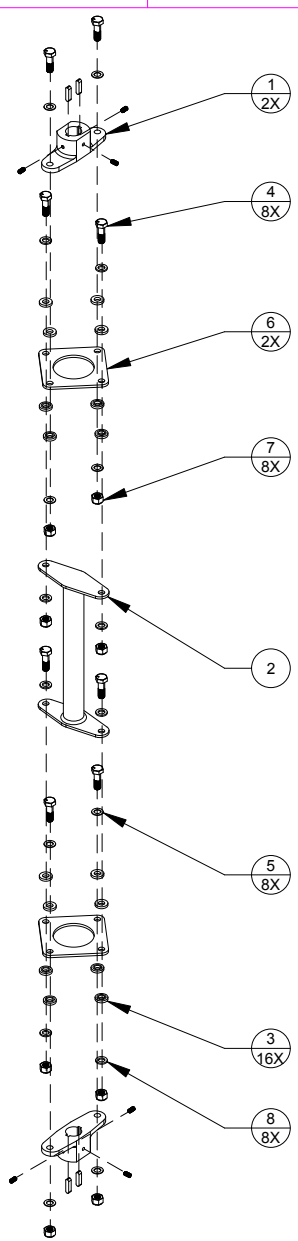


REVISIONS			
REV	DESCRIPTION	DATE	APPROVED
A	INITIAL RELEASE	4/08/2019	NFR



QTY	DESCRIPTION	PART NO. OR IDENTIFYING NO.	SPECIFICATION	MATERIAL OR NOTES	ITEM NO.
6	SCREW, 10-32 X 3/8 SET	31012			10
4	KEYSTOCK	31011			9
8	WASHER, AN960-516	31138			8
8	NUT, LOCK AN365-524	31059			7
2	PACK, FLEX PLATE	30841			6
8	WASHER, AN960-516L	31066			5
8	SCREW, AN5-10A	31005			4
16	WASHER, FLEX PLATE	31010			3
1	WELDMENT, SHAFT UPPER DRIVE XE	30630			2
2	FLANGE, COUPLER DRIVE SHAFT	30610			1

CITY		PART NO. OR IDENTIFYING NO.		SPECIFICATION		MATERIAL OR NOTES		ITEM NO.	
PARTS LIST									
DRAWN BY		W CONVILLE 6/17/19		COMPOSITE FX		TRENTON FLORIDA			
DATE				TITLE		SUBKIT, UPPER DRIVE SHAFT			
CHECKED		D JUNKIN 4/25/19		SIZE		D		CODE IDENT. NO.	
DATE				TOLERANCES ON DIMENSIONS ARE IN INCHES		--		REFERENCE	
APPRO		D JUNKIN 4/08/19		FRACTIONS		DECIMALS		ANGLES	
DATE				.X +/- 0.05		.XX +/- 0.025		+/- .5°	
DATE				+/-		XXX +/- 0.005			
UNLESS OTHERWISE SPECIFIED				SCALE NONE		WT. ACT.		SHEET 1 OF 1	

2. REMOVE BURRS AND BREAK ALL SHARP EDGES TO .01
 MATERIAL: SEE BILL OF MATERIALS
 NOTES: ALL DIMS IN INCHES UNLESS OTHERWISE SPECIFIED

APPLICATION	USED ON
X	X

THIS DRAWING AND THE INFORMATION THEREON IS THE PROPERTY OF THE COMPOSITE FX COMPANY AND IS CONSIDERED PROPRIETARY AND CONFIDENTIAL TO THE COMPOSITE FX COMPANY. REPRODUCTION OR DISCLOSURE OF ANY PART OF THIS DRAWING OR INFORMATION THEREON AND THE USE THEREOF FOR MAKING OTHER DRAWINGS OR FOR MAKING APPARATUS THEREFROM ARE PROHIBITED WITHOUT PRIOR SPECIFIC WRITTEN CONSENT OF COMPOSITE FX.